

2 BEDROOMS + DEN

WILLOW



DESCRIPTION

Two bedrooms plus den, 2 ensuite baths,
2 piece powder room and balcony.

SIZE

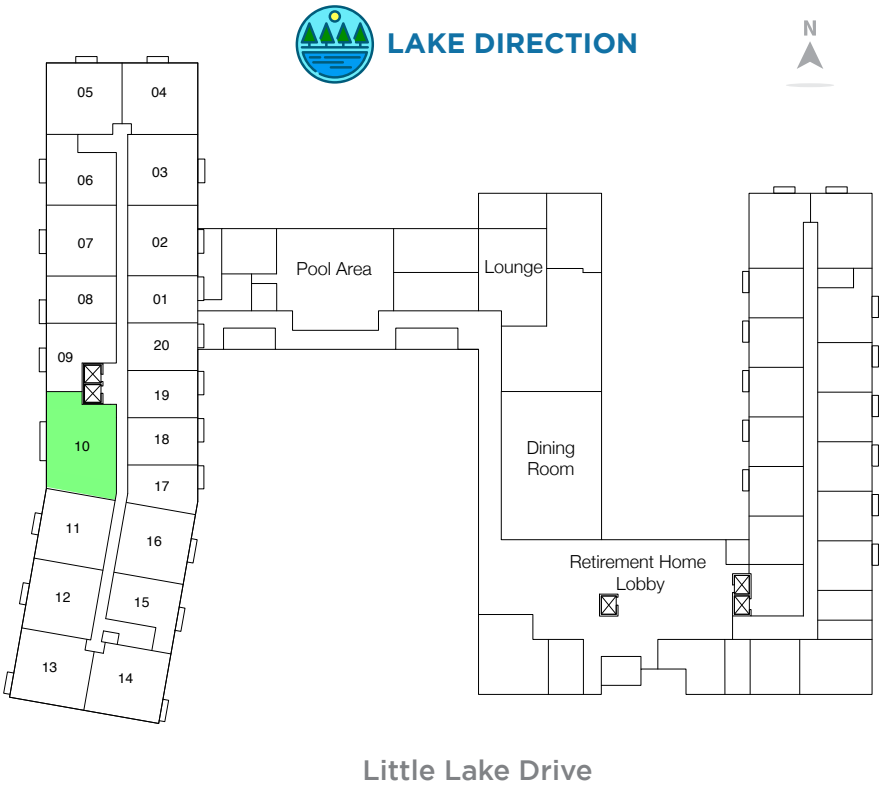
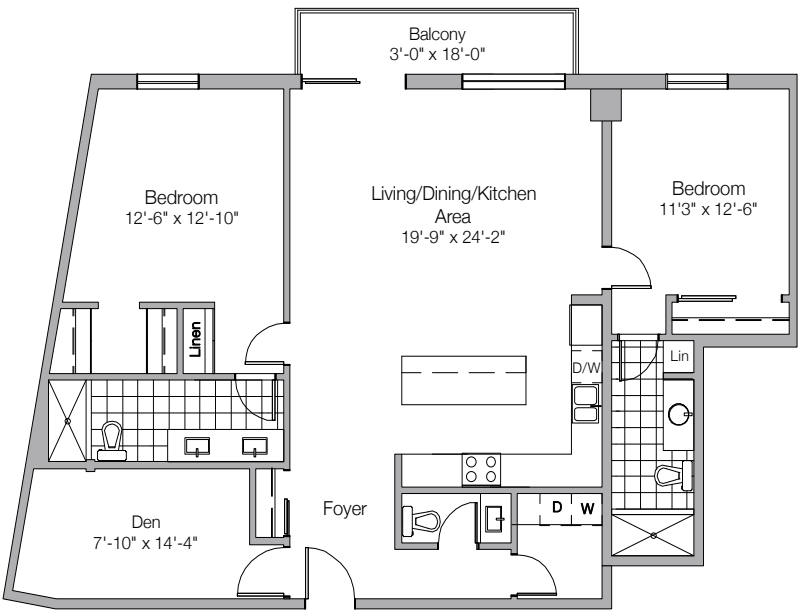
1441 SQ.FT.

AVAILABILITY

One unit per floor.

HIGHLIGHTS

Laminate flooring in principal rooms;
High quality porcelain limestone in
kitchen, foyer, bathrooms and laundry
areas; Four high quality stainless steel
appliances plus washer and dryer in
laundry room. Brushed nickel interior
hardware and door levers; Superior
quality kitchen and bathroom cabinets
and vanity; Quartz countertops; Full
width mirror over vanity in all bathrooms;
Interconnected smoke and carbon
monoxide alarms; Individual unit
controlled air conditioning and heating
system; TV cable outlets in the living
room and bedrooms; Multiple telephone
jacks.



All prices, figures, and materials are preliminary and subject to change without notice E.&O.E. June 1st, 2018.

10 Little Lake Drive
Barrie, ON L4M 7C1

705-719-9909
info@thelandingatlittlelake.com

www.thelandingatlittlelake.com