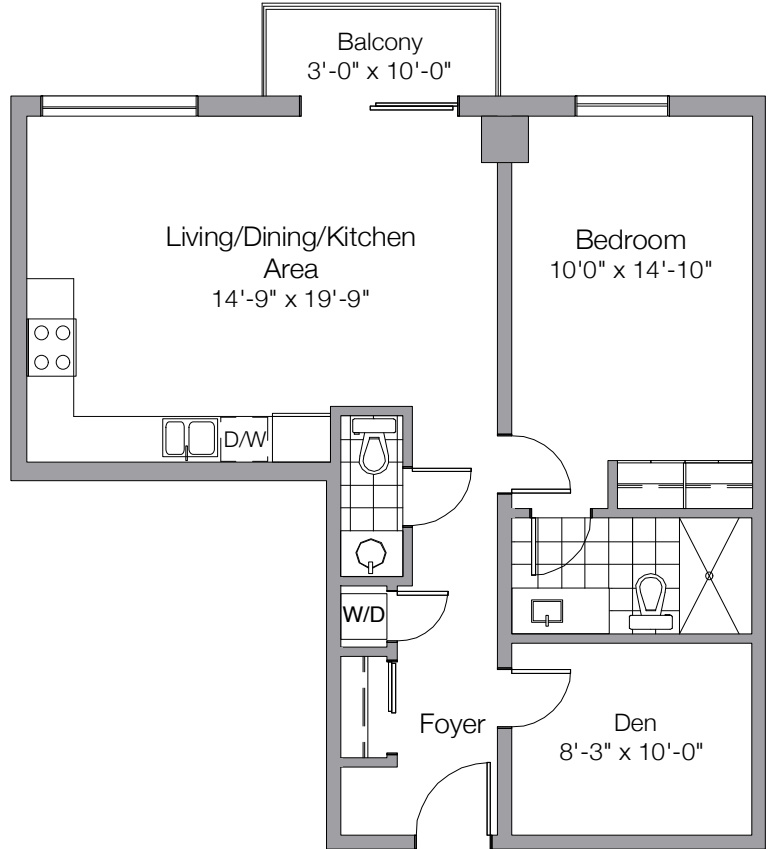


1 BEDROOM + DEN

WALLEYE



DESCRIPTION

One bedroom plus den with en suite bathroom, powder room, laundry room and balcony.

SIZE

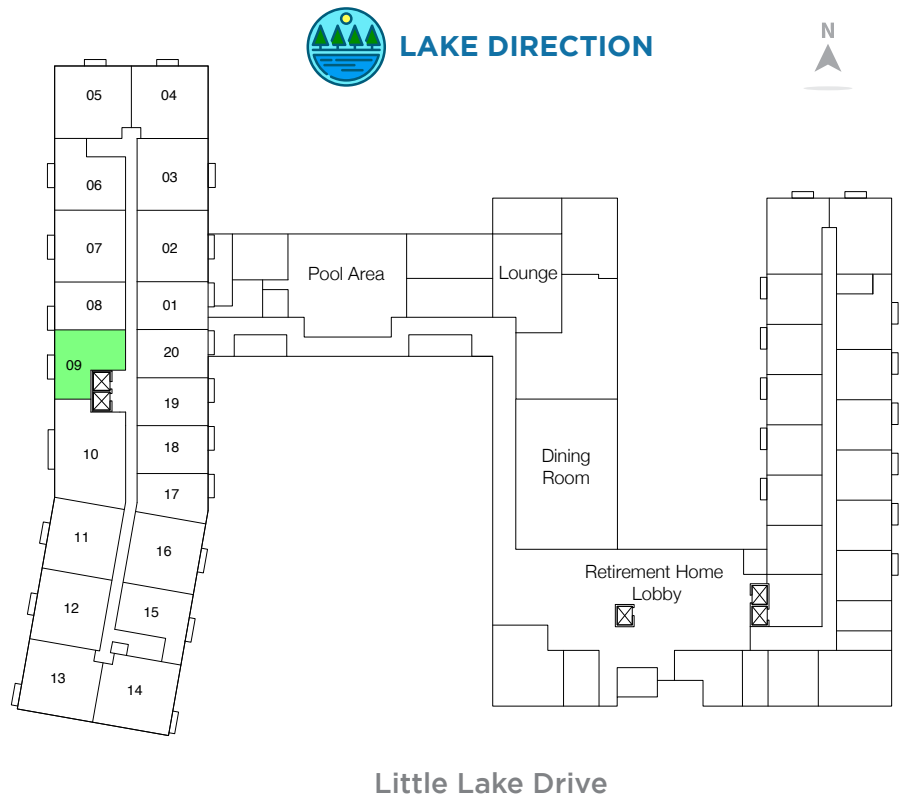
821 SQ.FT.

AVAILABILITY

One unit per floor.

HIGHLIGHTS

Laminate flooring in principal rooms; High quality porcelain limestone in kitchen, foyer and bathrooms; Four high quality stainless steel appliances plus washer and dryer. Brushed nickel interior hardware and door levers; Superior quality kitchen and bathroom cabinets and vanity; Quartz countertops; Full width mirror over vanity in all bathrooms; Interconnected smoke and carbon monoxide alarms; Individual unit controlled air conditioning and heating system; TV cable outlets in the living room and bedrooms; Multiple telephone jacks.



All prices, figures, and materials are preliminary and subject to change without notice E.&O.E. June 1st, 2018.

10 Little Lake Drive
Barrie, ON L4M 7C1

705-719-9909
info@thelandingatlittlelake.com

www.thelandingatlittlelake.com